

Mat Pyeatt

406-835-2240

Cell: 406-691-7008

mrland@3rivers.net

www.montana-ranch-land.com



\$7,500,000

The Lambrecht Creek Ranch

Nestled in the middle of the Pioneer Mountains, this 160 acre ranch is totally surrounded by National Forest with only wildlife as your neighbors. Its abundant wildlife includes a large elk herd, deer, bears, wolverines, bobcats, fox, coyotes and more . It also has a creek which is one of the few natural hatcheries of the western slope including Cutthroat Trout which are soon to be included on the endangered species list.

This property is partially timbered with lush meadows for the great wildlife habitat. There are over 6000,000 acres of public lands to access from the property, the recreation aspects are endless.

The properties history dates back to the late 1800's and entertained Native American camps, because of its great hunting and fishing before they migrated south for mild winters. It gained the name of Jerked Prairie and is still called that today. Many believe it was given that name because the Native Americans dried their meats and made their jerky

Notice: All information herein is from sources deemed reliable, but is not guaranteed by seller, Montana Ranch & Land. This offering is subject to errors, omissions, prior sale, change or withdrawal without notice and approval of the purchase by owner. We urge independent verification of each and every item submitted to the satisfaction of the prospective purchaser.

Montana Ranch & Land

Mat Pyeatt

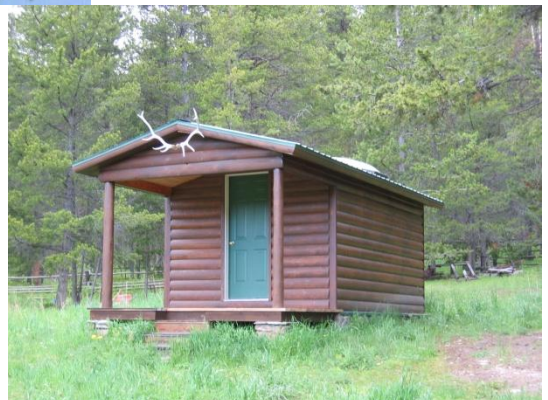
406-835-2240

Cell: 406-691-7008

mrland@3rivers.net

www.montana-ranch-land.com

Lambrecht Creek Ranch



This ranch has 3,500 square foot main lodge, which is a hand hewed log home, 2,200+ square foot shop and garage with apartment all solar powered with back up generation.

There is a 1,000 square foot log house for the caretaker, 3 guest cabins, shower house and shop located approximately ¼ mile away with running spring and pond.

This was part of the original homestead

MRL

Montana Ranch & Land

Mat Pyeatt

406-835-2240

Cell: 406-691-7008

mrland@3rivers.net

www.montana-ranch-land.com

**Lambrecht Creek
Ranch**



**Its abundant elk herd,
deer, bear, wolverine,
bobcat, fox, coyote,
and more. wildlife
includes a large**

MR&L

Montana Ranch & Land

Mat Pyeatt

406-835-2240

Cell: 406-691-7008

mrland@3rivers.net

www.montana-ranch-land.com

**Lambrecht Creek
Ranch**



**The Land
&
The views**

MRL

Mat Pyeatt

406-835-2240

Cell: 406-691-7008

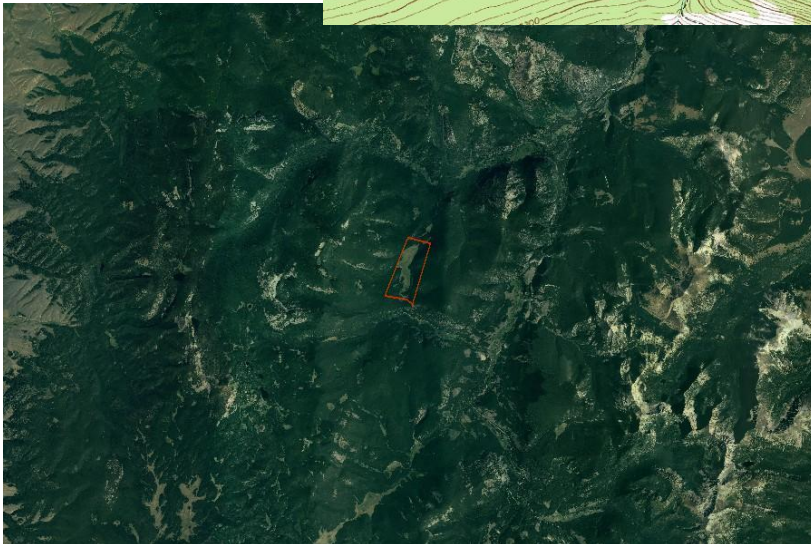
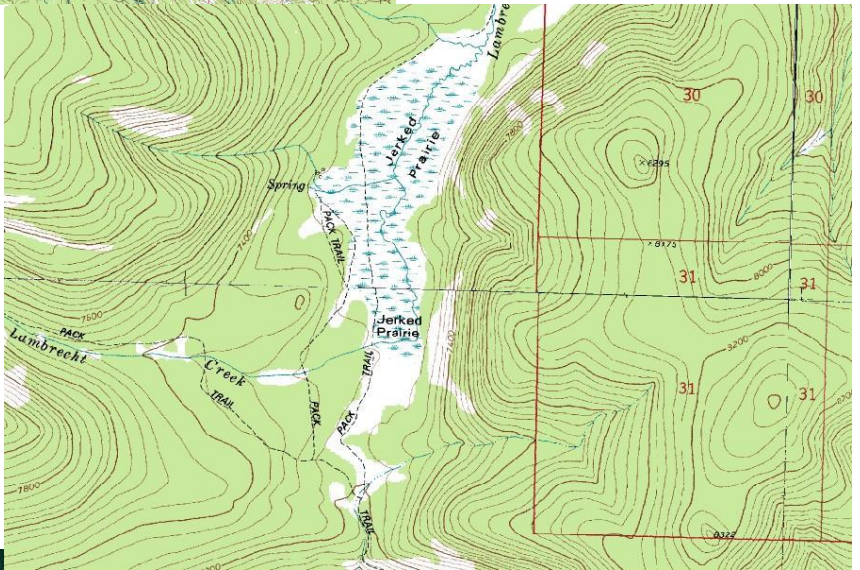
mrland@3rivers.net

www.montana-ranch-land.com

Lambrecht Creek Ranch



The Location



MRL

Notice: All information herein is from sources deemed reliable, but is not guaranteed by seller, Montana Ranch & Land. This offering is subject to errors, omissions, prior sale, change or withdrawal without notice and approval of the purchase by owner. We urge independent verification of each and every item submitted to the satisfaction of the prospective purchaser.